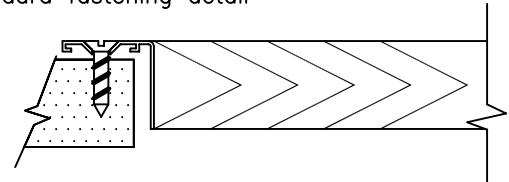


MODEL DGS

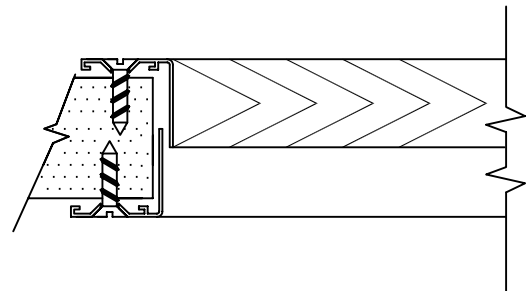
CONSTRUCTION NOTES:

- **Frame:** Heavy extruded aluminum. Frame is assembled using corner clips to assure hairline mitered corners. DGF Unit has removable back frame for use in areas where aesthetics are required on either side of the door or partition.
- **Blades:** Heavy rollformed aluminum. Each blade is permanently fixed at a 70° cross section (35° at face) in the frame.
- **Finish:** Powder coat baked enamel in the following colors;
 - White.
 - Satin aluminum.
- **Sizes:** 4" x 6" minimum, 24" x 24" maximum.

Standard fastening detail



Optional auxiliary frame detail (Model DGF)



NOTE: ALL DRAWINGS SUBJECT TO CHANGE WITHOUT PRIOR NOTICE.

TITLE:

ALUMINUM NON-VISION DOOR RETURN
MODELS DGS OR DGF



DRN BY: CV	DATE: 09/16/99	SCALE: NTS	DRAWING NO.
CKD BY: DJL	DATE: 2/15/00	REV: AO	DG101-A