

STANDARD CONSTRUCTION

FRAME:

HEAVY EXTRUDED ALUMINUM
CORNER CLIPS ASSURE HAIRLINE MITERED CORNERS
DESIGNED TO ACCOMMODATE 1" THICK WIRE-REINFORCED
WASHABLE HOGHAIR FILTER (FILTER PROVIDED)

BLADES:

HEAVY ROLLFORM ALUMINUM. ALL BLADES FIXED AT 45
DEGREE IN AN ALL ALUMINUM CORE FRAME

ACCESS DOORS:

MADE OF STUCCO EMBOSSED GALV-ALUM STEEL SHEET
(AZ50) WITH A PERIMETER ALUMINUM CHANNEL AND 1" R-4.2
FOIL FACED FIBERGLASS BOARD FOR INSULATION AND SOUND
ATTENUATION

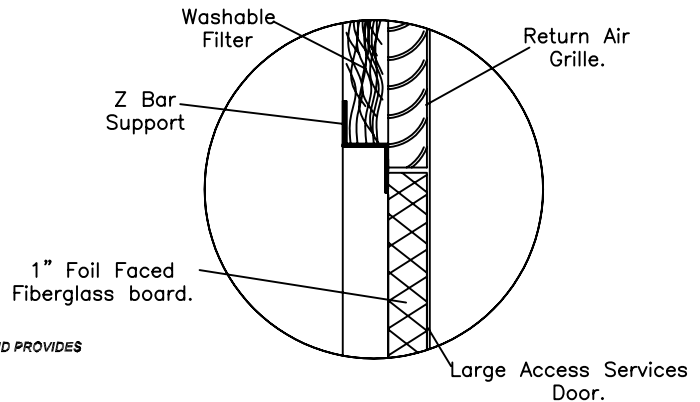
INSTALLATION:

ALLOW 2-1/2" CLEARANCE WHEN INSTALLING BELOW DAIKIN UNIT INDOOR UNIT.

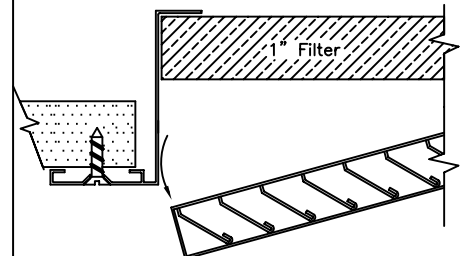
FINISH:

- POLYESTER SKY WHITE POWDER COAT (STANDARD)
- SPECIAL COLOR (SPECIFY _____)

DUPONT 100% POLYESTER POWDER COATING GIVES AN ATTRACTIVE BRIGHT WHITE FINISH AND PROVIDES
ADDITIONAL PROTECTION FROM AGING AND WEAR.



STANDARD FASTENING DETAIL



FRAME CHART			
	MODEL	WIDTH	HEIGHT
1	APRFFXM30	35 3/4"	45 3/4"
2	APRFFXM3648	45 3/4"	51 3/4"
RETURN AIR CORE CHART		SERVICE DOOR CHART	
	WIDTH	HEIGHT	
1	35 1/2"	11 1/2"	33 3/4"
2	45 1/2"	11 1/2"	39 3/4"

DAIKIN FXMQ-SERIES

ACCESS PANEL / RETURN AIR WITH FILTER
PRODUCT SPECIFICATIONS

NOTE: ALL DRAWINGS SUBJECT TO CHANGE WITHOUT PRIOR NOTICE.



Grille tech inc.

DRAWN BY:	AF	DATE:	09/18/07	SCALE:	NOT TO SCALE	DRAWING NO.:	FXMQ30, 36, 48APRF
CHECKED BY:	IG	DATE:	09/18/07	REVISION:	1		