

**STANDARD CONSTRUCTION**

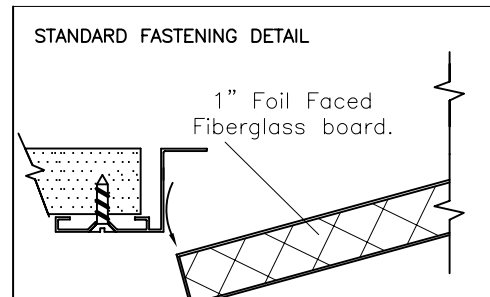
**FRAME:**  
HEAVY EXTRUDED ALUMINUM  
CORNER CLIPS ASSURE HAIRLINE MITERED CORNERS

**ACCESS DOORS:**  
MADE OF STUCCO EMBOSSED GALV-ALUM STEEL SHEET (AZ50) WITH A PERIMETER ALUMINUM CHANNEL AND 1" R-4.2 FOIL FACED FIBERGLASS BOARD FOR INSULATION AND SOUND ATTENUATION

**INSTALLATION:**  
ALLOW 1-1/2" CLEARANCE WHEN INSTALLING BELOW A DAIKIN INDOOR UNIT.

- FINISH:**
- POLYESTER SKY WHITE POWDER COAT (STANDARD)
  - SPECIAL COLOR (SPECIFY \_\_\_\_\_)

DUPONT 100% POLYESTER POWDER COATING GIVES AN ATTRACTIVE BRIGHT WHITE FINISH AND PROVIDES ADDITIONAL PROTECTION FROM AGING AND WEAR.



FRAME CHART			
	MODEL	WIDTH	HEIGHT
1	APFXMQ30	35 3/4"	33 3/4"
2	APFXMQ3648	51 3/4"	33 3/4"

**DAIKIN FXMQ-SERIES**

ACCESS PANEL DOOR  
PRODUCT SPECIFICATIONS

NOTE: ALL DRAWINGS SUBJECT TO CHANGE WITHOUT PRIOR NOTICE.



DRAWN BY:	AF	DATE:	09/18/07	SCALE:	NOT TO SCALE	DRAWING NO.	FXMQ30, 36 48AP
CHECKED BY:	IG	DATE:	09/18/07	REVISION:	1		