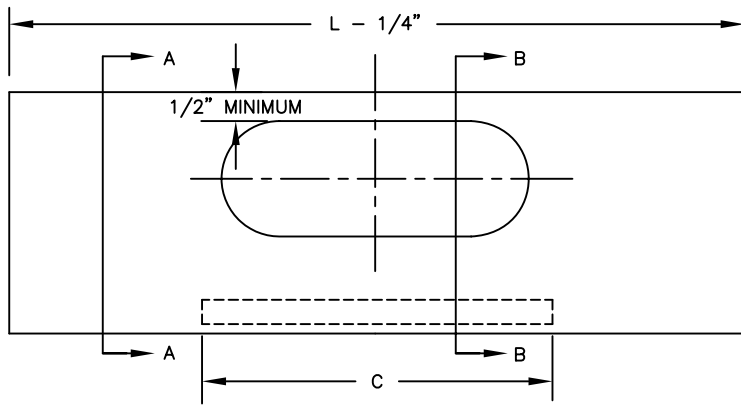


**BASIC DIMENSIONS:**

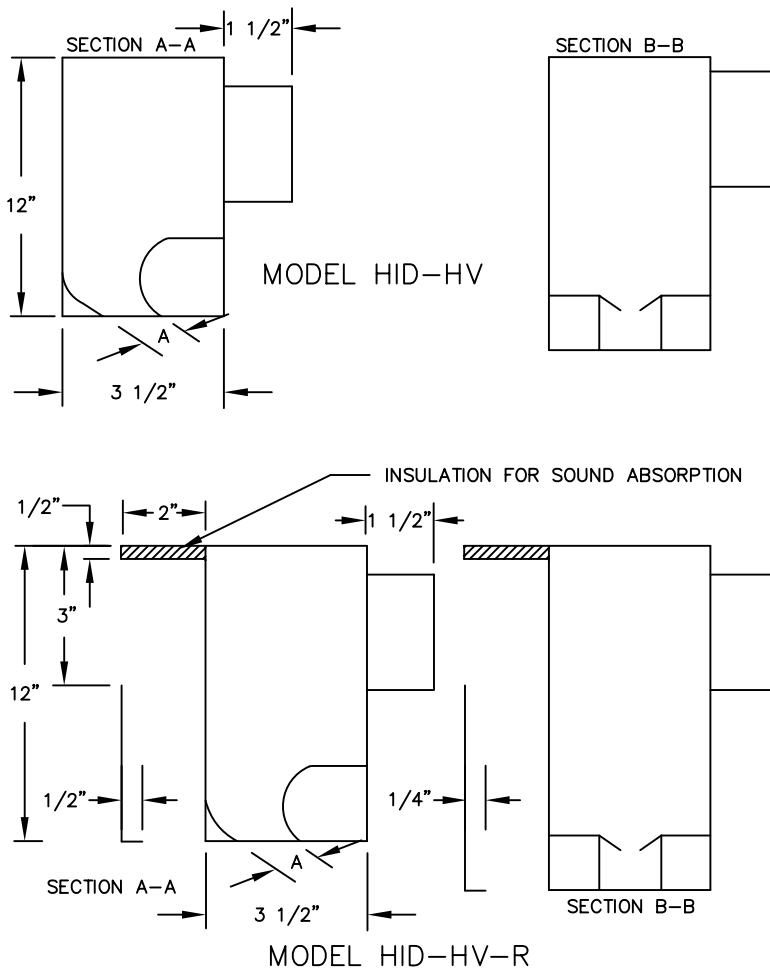


CEILING MODULE					UNIT SIZE	A
L	2'	3'	4'	5'	500	$3/8"$
C	6"	12"	12"	18"	750	$3/4"$

**MODELS AVAILABLE:**

- HID-HV-500 ( $3/8"$  SLOT)
  - SUPPLY DIFFUSER C/W CENTER VERTICAL DISCHARGE
- HID-HV-750 ( $3/4"$  SLOT)
  - SUPPLY DIFFUSER C/W CENTER VERTICAL DISCHARGE
- HID-HV-R-500 ( $3/8"$  SLOT)
  - SUPPLY/RETURN DIFFUSER C/W CENTER VERTICAL DISCHARGE
- HID-HV-R-750 ( $3/4"$  SLOT)
  - SUPPLY/RETURN DIFFUSER C/W CENTER VERTICAL DISCHARGE

**CROSS SECTIONAL DIMENSIONS:**



**BASIC INFORMATION:**

**MATERIAL:**

22 GAUGE ZINC COATED STEEL.

**FINISH:**

- MATTE BLACK FACE & ALL OTHER COMPONENTS VISABLE FROM FACE OF INSTALLED DIFFUSER.

**INSULATION (OPTIONAL):**

- $1/2"$  EXTERNALLY (FOIL BACK) WRAPPED.

**NOTES:**

- INLET COLLARS ARE 5 & 6 INCH ROUND, OR 8 & 10" OVAL (WITH 6" VERTICAL HEIGHT).
- FOR USE IN CONJUNCTION WITH STANDARD (1" INVERTED TEE) TEE-BAR CEILING SYSTEMS ONLY.

**NOTE:** ALL DRAWINGS SUBJECT TO CHANGE WITHOUT PRIOR NOTICE.

TITLE:

SERIES HID-H-V & HID-HV-R  
HIGH INDUCTION LINEAR SLOT DIFFUSERS



DRN BY: AC	DATE: 09/20/99	SCALE: NTS	DRAWING NO.
CKD BY: DJL	DATE: 2/15/00	REV: A0	PB302-A