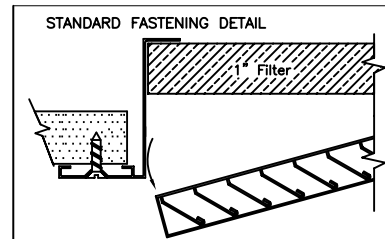
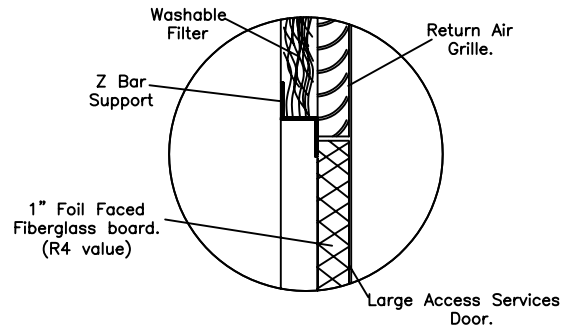


**STANDARD CONSTRUCTION**

- **FRAME:**  
HEAVY EXTRUDED ALUMINUM  
CORNER CLIPS ASSURE HAIRLINE MITERED CORNERS  
DESIGNED TO ACCOMMODATE 1" THICK WIRE-REINFORCED  
WASHABLE HOGHAIR FILTER (FILTER PROVIDED)
  - **BLADES:**  
HEAVY ROLLFORM ALUMINUM. ALL BLADES FIXED AT 45  
DEGREE IN AN ALL ALUMINUM CORE FRAME
  - **ACCESS DOORS:**  
MADE OF STUCCO EMBOSSED GALV-ALUM STEEL SHEET  
(AZ50) WITH A PERIMETER ALUMINUM CHANNEL AND 1" R-4.2  
FOIL FACED FIBERGLASS BOARD FOR INSULATION AND SOUND ATTENUATION
- INSTALLATION**  
ALLOW 2-1/2" CLEARANCE WHEN INSTALLING BELOW MITSUBISHI INDOOR UNIT.
- **FINISH:**  
 POLYESTER SKY WHITE POWDER COAT (STANDARD)  
 SPECIAL COLOR (SPECIFY \_\_\_\_\_)
- DUPONT 100% POLYESTER POWDER COATING GIVES AN ATTRACTIVE BRIGHT WHITE  
FINISH AND PROVIDES ADDITIONAL PROTECTION FROM AGING AND WEAR.



DISMENSIONS CHART MODEL	FRAME		RETURN AIR CORE		SERVICE DOOR	
	WIDTH	DEPTH	WIDTH	DEPTH	WIDTH	DEPTH
APRFPDFY-P06,08,12	29 3/4"	39 3/4"	29 1/2"	7 1/2"	29 1/2"	31 1/2"
APRFPDFY-P15,18	39 3/4"	43 3/4"	39 1/2"	11 1/2"	39 1/2"	31 1/2"
APRFPDFY-P24,27,30	47 3/4"	43 3/4"	47 1/2"	11 1/2"	47 1/2"	31 1/2"
APRFPDFY-P36,48	61 3/4"	44 3/4"	61 1/2"	11 1/2"	61 1/2"	32 1/2"

**MITSUBISHI PDFY-P SERIES**

ACCESS PANEL / RETURN AIR WITH FILTER  
PRODUCT SPECIFICATIONS

NOTE: ALL DRAWINGS SUBJECT TO CHANGE WITHOUT PRIOR NOTICE.



**Grille tech inc.**

DRAWN BY: AF	DATE: 05.09.2009	SCALE: NOT TO SCALE	DRAWING NO. PDFY-P SERIES
CHECKED BY: IV	DATE: 05.09.2009	REVISION: AV	